

## Hockey mh15 am8 aa16

### Field Hockey

#### Field Hockey Field

field dimensions: 91 meters x 55 meters

mounting height: 15 meters

number of poles: 8

number of fixtures: 16

lighting class: EN-12193 class II knhb

horizontal illuminance in use = 250 lux

uniformity  $E_{hmin}/E_{hgem} = 0.7$

IES files v6.0.3 -date 23 December 2018

The nominal values shown in this report are the result of precision calculations, based upon precisely positioned luminaires in a fixed relationship to each other and to the area under examination. In practice the values may vary due to tolerances on luminaires, luminaire positioning, reflection properties and/or electrical supply. Tolerated differences are defined in EN-12193 clause 5.4 with a maximum of 10%.

Datum: 16.01.2019

Operator: HO

AAA-LUX  
Meerenakkerplein 9  
5652 BJ EINDHOVEN  
The Netherlands

Operator HO  
Telefoon  
Fax  
e-Mail

## Inhoudsopgave

<b>Hockey mh15 am8 aa16</b>	
Voorblad project	1
Inhoudsopgave	2
<b>AAA-LUX WS2006 v6.0.3</b>	
Gegevensblad armaturen	3
<b>Hockey mh15 am8 aa16</b>	
Stuklijst armaturen	4
Armaturen (positieschema)	5
Sportarmaturen (coördinatenlijst)	6
<b>Buitenvlakken</b>	
<b>Calculation Grid according EN12193</b>	
Isolijnen (E, horizontaal)	8

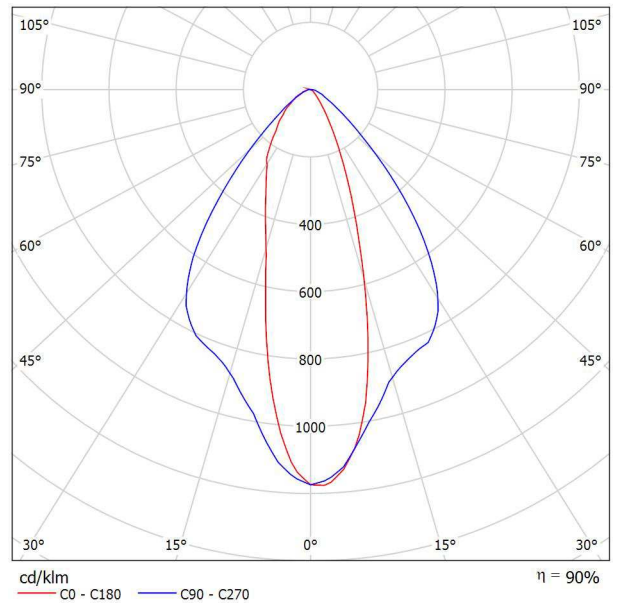
AAA-LUX  
Meerenakkerplein 9  
5652 BJ EINDHOVEN  
The Netherlands

Operator HO  
Telefoon  
Fax  
e-Mail

## AAA-LUX WS2006 v6.0.3 / Gegevensblad armaturen

In de armaturencatalogus vindt u een afbeelding van het armatuur.

Lichtuitstraling 1:



Armatuurcategorie volgens CIE: 100  
CIE Flux code: 79 95 99 100 90

Vanwege ontbrekende symmetrie-eigenschappen kan er voor deze armatuur geen UGR-tabel worden weergegeve

AAA-LUX  
Meerenakkerplein 9  
5652 BJ EINDHOVEN  
The Netherlands

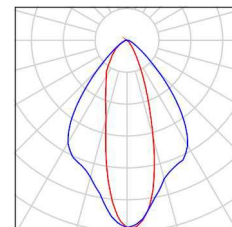
Operator HO  
Telefoon  
Fax  
e-Mail

---

## Hockey mh15 am8 aa16 / Stuklijst armaturen

16 Stuk    AAA-LUX WS2006 v6.0.3  
              Artikelnr.:  
              Lichtstroom (Armatuur): 182334 lm  
              Lichtstroom (Lampen): 202870 lm  
              Armatuurvermogen: 1550.0 W  
              Armatuurcategorie volgens CIE: 100  
              CIE Flux code: 79 95 99 100 90  
              Uitrusting: 1 x LED SOURCE AAA-LUX  
              (Correctiefactor 1.000).

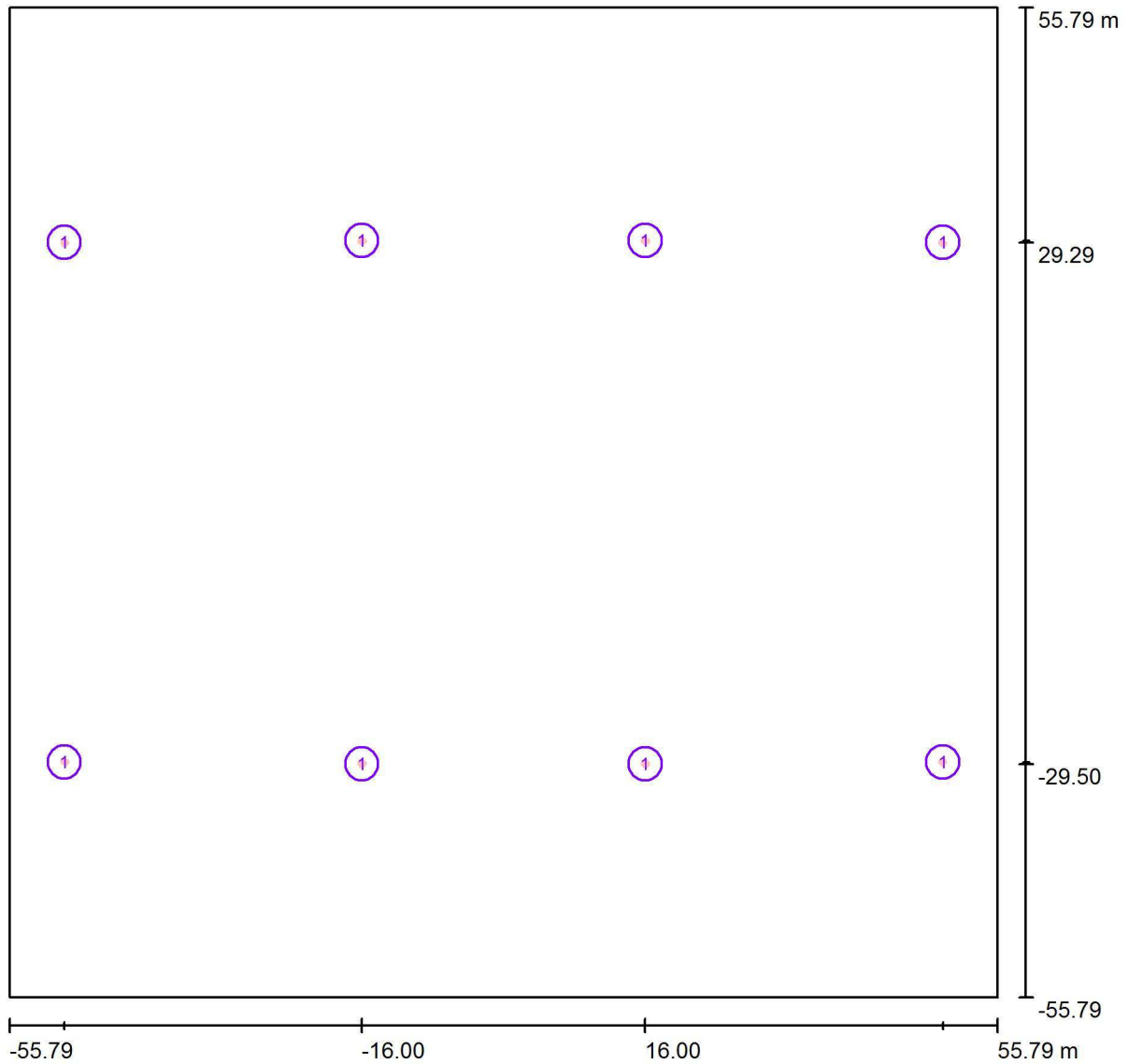
In de  
armaturen­katalogus  
vindt u een afbeelding  
van het armatuur.



AAA-LUX  
 Meerenakkerplein 9  
 5652 BJ EINDHOVEN  
 The Netherlands

Operator HO  
 Telefoon  
 Fax  
 e-Mail

**Hockey mh15 am8 aa16 / Armaturen (positieschema)**



Schaal 1 : 798

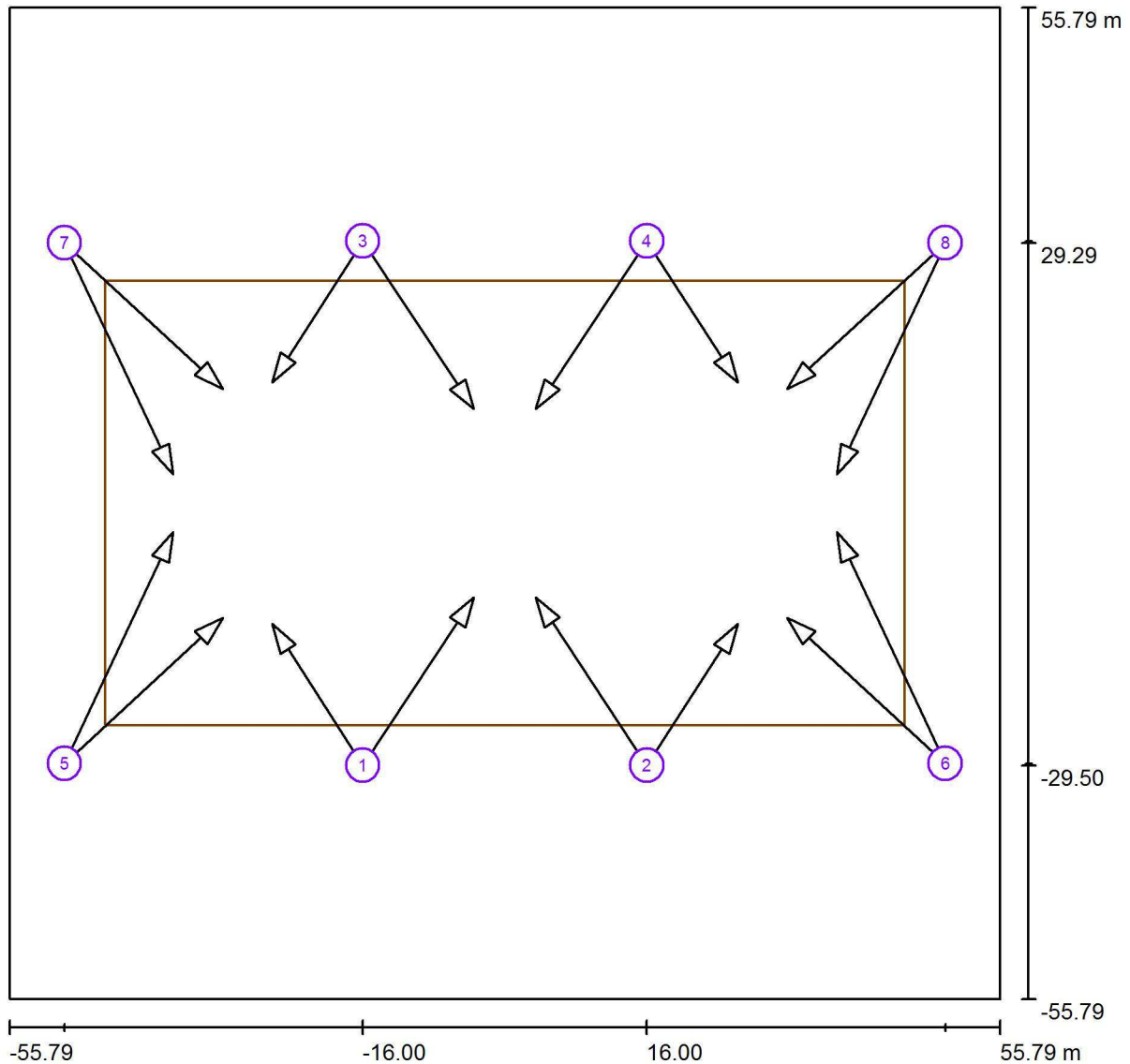
**Armaturen stuklijst**

Nr.	Stuk	Type
1	16	AAA-LUX WS2006 v6.0.3

AAA-LUX  
 Meerenakkerplein 9  
 5652 BJ EINDHOVEN  
 The Netherlands

Operator HO  
 Telefoon  
 Fax  
 e-Mail

### Hockey mh15 am8 aa16 / Sportarmaturen (coördinatenlijst)



Schaal 1 : 798

#### Lijst van sportarmaturen

Armatuur	Index	Positie [m]			Verlichtingspunt [m]			Verlichtingshoek [°]	Richting	Mast
		X	Y	Z	X	Y	Z			
AAA-LUX WS2006 v6.0.3	1	-16.000	-29.500	15.000	-3.477	-10.588	0.000	33.5	(C 0, G 0)	/
AAA-LUX WS2006 v6.0.3	1	-16.000	-29.500	15.000	-26.233	-13.591	0.000	38.4	(C 0, G 0)	/
AAA-LUX WS2006 v6.0.3	2	16.000	-29.500	15.000	3.477	-10.588	0.000	33.5	(C 0, G 0)	/
AAA-LUX WS2006 v6.0.3	2	16.000	-29.500	15.000	26.233	-13.591	0.000	38.4	(C 0, G 0)	/

AAA-LUX  
 Meerenakkerplein 9  
 5652 BJ EINDHOVEN  
 The Netherlands

Operator HO  
 Telefoon  
 Fax  
 e-Mail

## Hockey mh15 am8 aa16 / Sportarmaturen (coördinatenlijst)

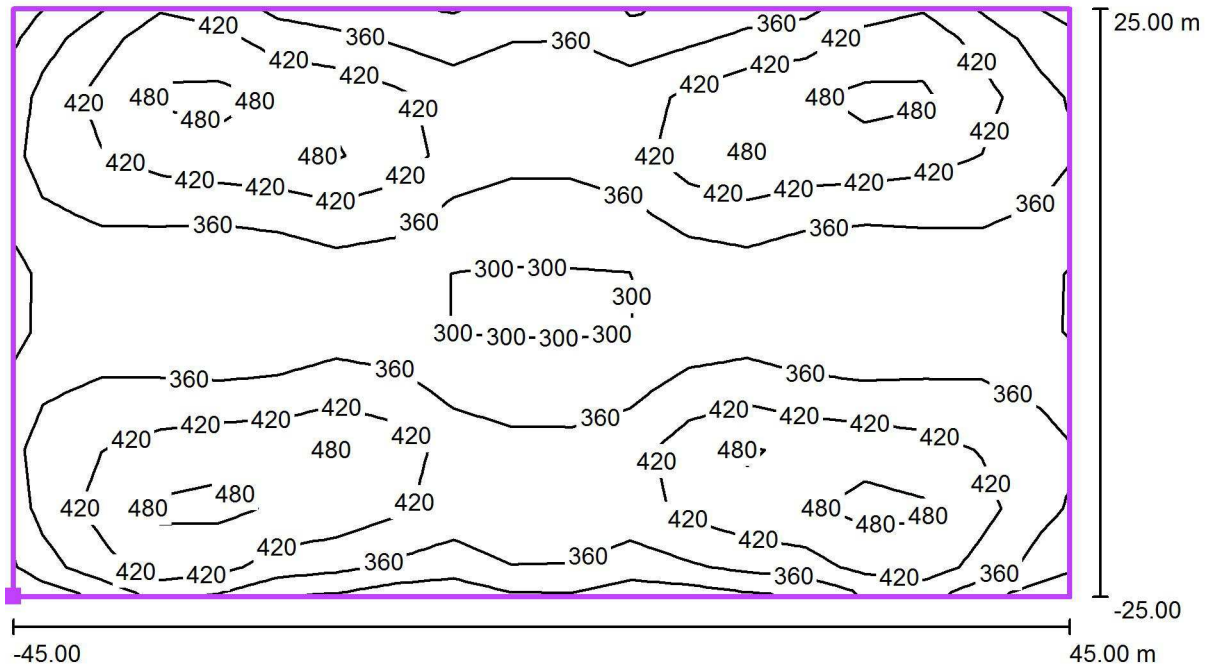
### Lijst van sportarmaturen

Armatuur	Index	Positie [m]			Verlichtingspunt [m]			Verlichtingshoek [°]	Richting	Mast
		X	Y	Z	X	Y	Z			
AAA-LUX WS2006 v6.0.3	3	-16.000	29.500	15.000	-3.477	10.588	0.000	33.5	(C 0, G 0)	/
AAA-LUX WS2006 v6.0.3	3	-16.000	29.500	15.000	-26.233	13.591	0.000	38.4	(C 0, G 0)	/
AAA-LUX WS2006 v6.0.3	4	16.000	29.500	15.000	3.477	10.588	0.000	33.5	(C 0, G 0)	/
AAA-LUX WS2006 v6.0.3	4	16.000	29.500	15.000	26.233	13.591	0.000	38.4	(C 0, G 0)	/
AAA-LUX WS2006 v6.0.3	5	-49.600	-29.293	15.000	-37.375	-3.240	0.000	27.5	(C 0, G 0)	/
AAA-LUX WS2006 v6.0.3	5	-49.600	-29.293	15.000	-31.765	-12.880	0.000	31.8	(C 0, G 0)	/
AAA-LUX WS2006 v6.0.3	6	49.600	-29.293	15.000	37.375	-3.240	0.000	27.5	(C 0, G 0)	/
AAA-LUX WS2006 v6.0.3	6	49.600	-29.293	15.000	31.765	-12.880	0.000	31.8	(C 0, G 0)	/
AAA-LUX WS2006 v6.0.3	7	-49.600	29.293	15.000	-37.375	3.240	0.000	27.5	(C 0, G 0)	/
AAA-LUX WS2006 v6.0.3	7	-49.600	29.293	15.000	-31.765	12.880	0.000	31.8	(C 0, G 0)	/
AAA-LUX WS2006 v6.0.3	8	49.600	29.293	15.000	37.375	3.240	0.000	27.5	(C 0, G 0)	/
AAA-LUX WS2006 v6.0.3	8	49.600	29.293	15.000	31.765	12.880	0.000	31.8	(C 0, G 0)	/

AAA-LUX  
 Meerenakkerplein 9  
 5652 BJ EINDHOVEN  
 The Netherlands

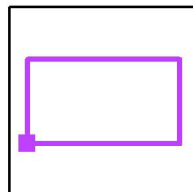
Operator HO  
 Telefoon  
 Fax  
 e-Mail

### Hockey mh15 am8 aa16 / Calculation Grid according EN12193 / Isolijnen (E, horizontaal)



Waarden in Lux, Schaal 1 : 644

Positie van het vlak in het buitendecor:  
 Gemarkeerd punt: (-45.000 m, -25.000 m, 0.000 m)



Raster: 19 x 11 Punten

$E_{gem}$ [lx]	$E_s$ [lx]	$E_{max}$ [lx]	$E_s / E_{gem}$	$E_s / E_{max}$
380	281	534	0.74	0.53